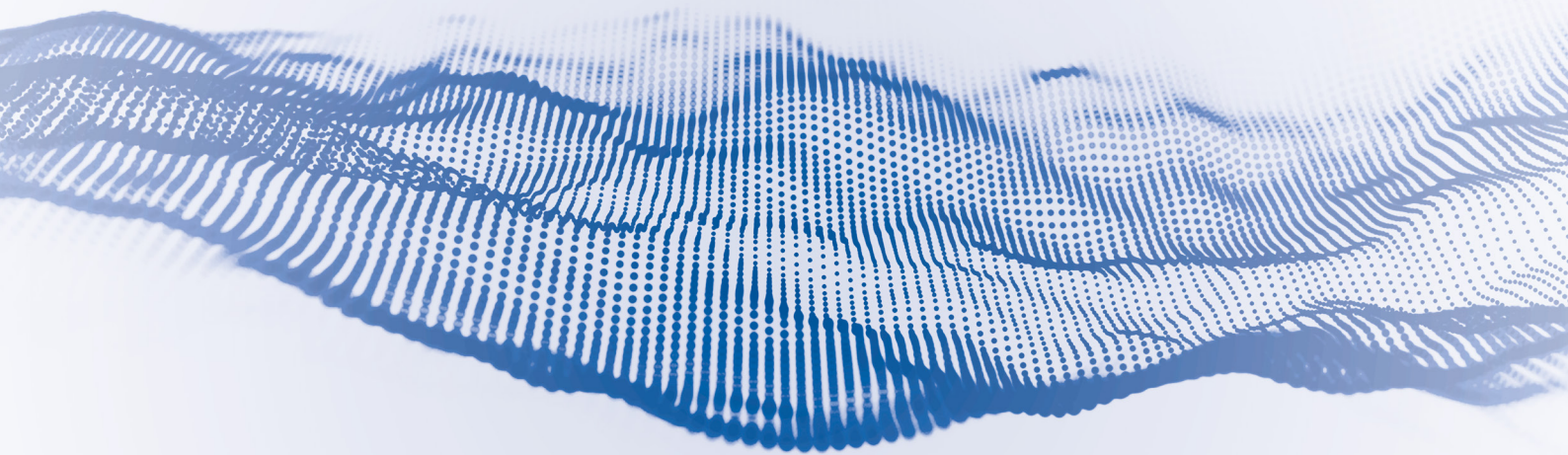
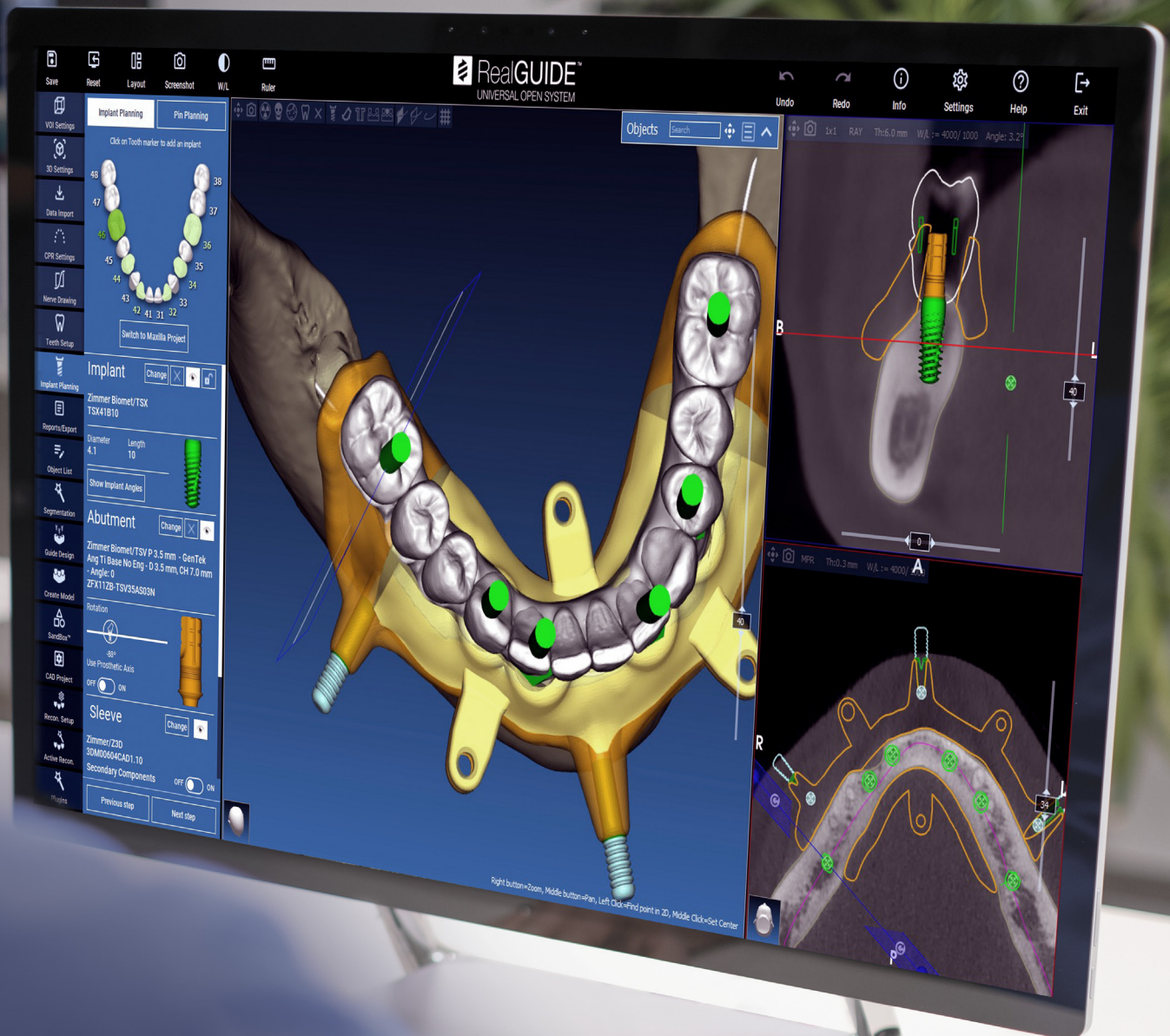


RealGUIDE[®] Software Suite



Evolving Dentistry Through Technology



Discover RealGUIDE® and enter the world of digital dentistry!

A complete digital platform that connects the entire team of experts and allows them to collaborate and discuss on different clinical cases.

A multifunctional software, divided in different modules and suitable to all your needs.

RealGUIDE®

Everything you need

The chance of placing a dental implant in the planned position is priceless!
Add also the possibility of a mini-invasive and predictable surgery, supported by a functional and aesthetic design of the final prosthesis.

RealGUIDE® provides you with everything you need for a precise and safe planning of your clinical cases. The software consists of different modules that can be combined for advanced diagnosis, implant placement, advanced surgical guide design and prosthetic modelling.



Universal platform for diagnosis, implant planning, surgical guide and prosthesis modelling, compatible with DICOM and STL files



Extremely easy to use! Manage your patient with the tap of a finger



Patients' data are always available on the Cloud platform



Share and discuss your clinical cases with your colleagues, dental technician or specialist, through the integrated communication system



Open to all implant systems and accessible to everyone, by offering multiple licensing options suited to doctors, dental technicians and students



Low initial investment due to the monthly subscription for the complete platform



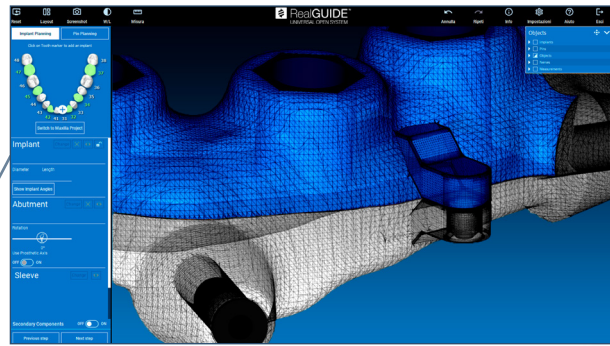
EU certified and FDA cleared Medical Device. ISO 13485 Quality Management System.



PC, MAC and mobile platforms (Apple iOS) native system



Powerful artificial intelligence algorithms at your disposal in the most critical steps of planning and modelling

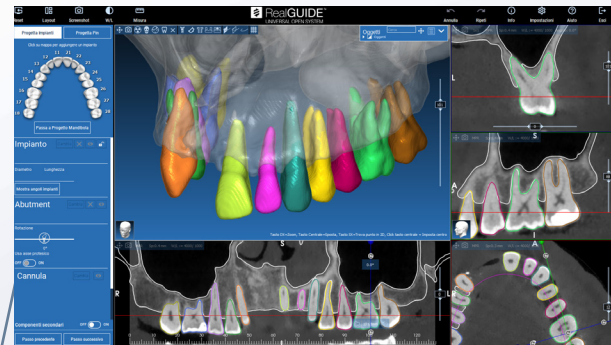


SANDBOX™

A very powerful modelling environment to unleash your creativity and project the most suitable implant-prosthetic rehabilitation for your patient. Simplify your workflow and create customized modelling environments with individual protocols and libraries. Generate STL files in a fully integrated parametric modelling environment: cut, split, merge and repair every STL file you want.

Here are just a few examples of the infinite types of modelling available:

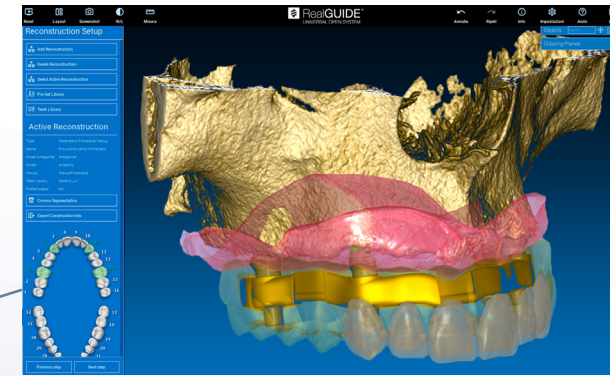
- Stackable and bone resection guides
- Customized bone grafts
- Models
- Customized bars
- Prosthetic connectors
- Partial frameworks
- Sub-periosteal grids and implants



ARTIFICIAL INTELLIGENCE

RealGUIDE® assists you in the most critical steps like STL and DICOM files matching, bone and single teeth segmentation as well as recognition and automatic extraction of crowns from imported files. Artificial Intelligence tools will automate your data processing and provide you with a virtual patient model in a few clicks:

- Automatic panoramic curve tracking
- Assisted mandibular nerve recognition
- Assisted DICOM/STL and STL/STL matching
- Bone and single teeth segmentation
- Automatic crown extraction from 3D files



INTEGRATED CAD MODULE

A prosthetic modelling platform integrated with the other RealGUIDE® modules. Say goodbye to constant exchange of files between different software: keep everything in a single working environment.

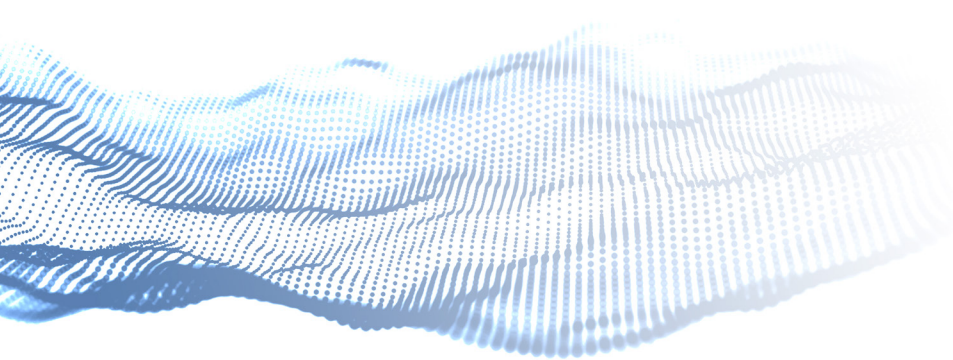
Included prosthetic features:

- Crowns and bridges
- Bars and overdentures
- Temporary bridges
- Complete and partial removable prosthesis
- Immediate load temporary restorations
- Model Creation
- Bite Splints
- Virtual Articulation System
- Advanced Teeth Setup



ADVANCED TEETH SETUP

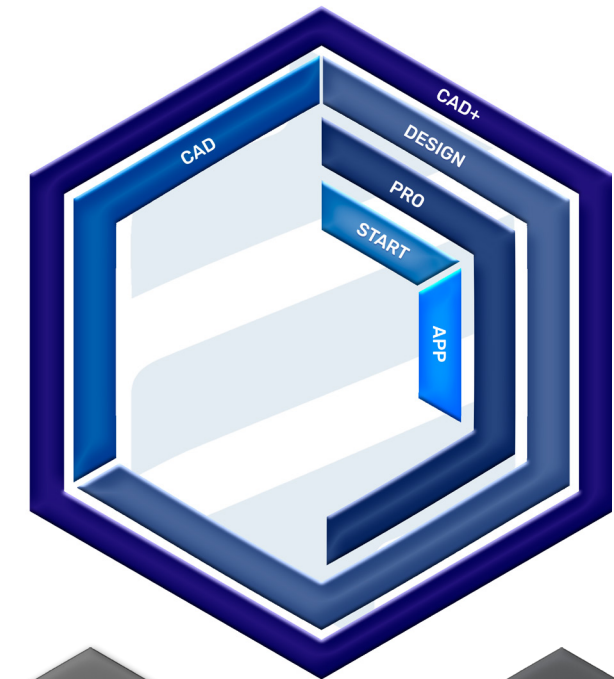
The new TEETH SETUP workflow is available in the PRO module and following. Design your wax-up from the teeth library in relation to the antagonist arch with a few clicks. You can also import your patient's photo for an aesthetic and functional design.



REALGUIDE® SOFTWARE SUITE

A module
for any needs

LICENSES AVAILABLE
FOR PURCHASE OR
SUBSCRIPTION
(monthly or annual)



FREE MODULE FOR DATA IMPORT AND DIAGNOSIS

5 PATIENTS

- Create your patient folder
- Share your projects with other RealGUIDE® users through the CLOUD and communicate thanks to the integrated chat
- Analyze DICOM images and modify 3D files. Match your files using the AI algorithm
- Automatically trace the panoramic curve and draw the mandibular canal

DIAGNOSIS AND IMPLANT PLANNING APP

Available for iOS

20 PATIENTS

- Communicate in a clearer way with your patients
- Visualize DICOM and 3D files and chat on iPad/iPhone
- Make diagnosis and implant planning starting from projects created on your computer license (not available for CAD only versions)

IMPLANT PLANNING AND ADVANCED 3D DIAGNOSIS MODULE

50 PATIENTS

- Create your implant project using prosthetic components to get a prosthetically-guided planning
- Get access to a wide and completely open implant library, available on the CLOUD
- Create your implant project using prosthetic components to get a prosthetically-guided planning
- Create a wax-up from library with the new Teeth Setup features
- Export your projects and drill reports

IMPLANT PLANNING AND GUIDE MODELLING MODULE

100 PATIENTS

- Model all types of surgical guides starting from your implant planning
- Take advantage of the included Sandbox™ module to unleash your creativity and project the most suitable implant-prosthetic rehabilitation for your patient
- Create anatomical models with analogue holes from your implant projects
- Export surgical guides, models, scan abutments associated to your project in STL format for 3D printing and milling

STAND-ALONE PROSTHETIC MODULE

50 PATIENTS

- Create temporary immediate loading with reinforcement bar starting from the implant project
- Construct temporary shell elements (also on definitive healing abutments)
- Design cemented crowns and bridges on implants from teeth library or wax-up
- Design digital mock-ups with and without gingiva on residual teeth, bars and implants
- Create profile bars with attachments
- Integrated Sandbox™ module
- Virtual articulator and diagnostics mandibular movements
- Smile analysis with facial scans and/or photographs
- Export your work in STL format, oriented and ready for CAM programs
- Direct interface with Millbox® and Hyperdent®

ALL IN ONE SOLUTION

100 PATIENTS

- Take advantage of the comprehensive platform that integrates START, APP, PRO, DESIGN and CAD
- A complete system at your disposal for digital workflow management: data import, implant planning, surgical guides creation and design of any prosthetic restoration in a single integrated environment for both dentists and dental technicians

BOOST YOUR KNOWLEDGE

The 3Diemme Team experience at your disposal to deepen your RealGUIDE® Software Suite knowledge. Multiple solutions to meet all your needs!



VIDEO TUTORIAL

Over 50 short videos illustrating the main features of each software module.

Watch them from your studio or your sofa at home, wherever and whenever you want!

[Watch now](#)

HELPDESK

A doubt is nagging at you or something is not working? Visit our [Helpdesk](#) page and find what's right for you! A large number of frequently asked questions allows you to learn more about RealGUIDE® commercial and technical details. A completely open platform at your disposal 24 hours a day. If you have any uncertainties, take advantage of the ticketing platform and chat directly with a member of our team!

[Open your ticket](#)

E-LEARNING PLATFORM

Coming soon: a web-based learning platform to guide you through your implant-prosthetic rehabilitation workflows! Build your RealGUIDE® workflow step by step, save it and share it!

ON-SITE COURSES

Visit us at our premises for live training on the software. You will have the opportunity to learn more about the RealGUIDE® modules and meet the team. Different types of courses and dates available.

[Booking now](#)

CUSTOMIZED COURSES

Do you have specific inquiries that none of the courses programs meet? Contact us to schedule a course tailored to your needs: online or in-house trainings at your disposal!

support@3diemme.it

ASSISTANCE

Don't forget the possibility of purchasing 1to1 support hours directly from our website. Whether it is implant planning, prosthetic modelling or a customized session to deepen your knowledge of the software, we are here for you. After you have made your purchase please contact us to schedule the date, time and topics of the training

[Get support](#)

3DIEMME S.r.l.

Via Delle Baraggette 10 | 22060 Figino Serenza (CO) | Italy
Phone +39 031.7073353 | support@3diemme.it | www.3diemme.it

